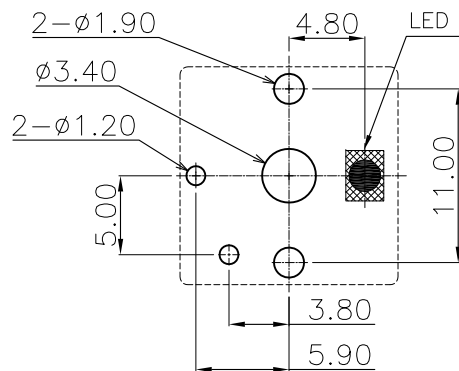
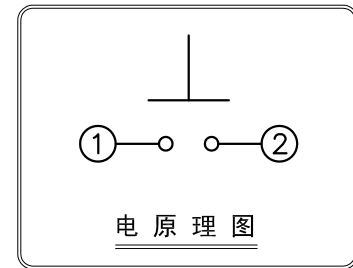
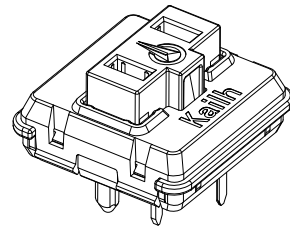
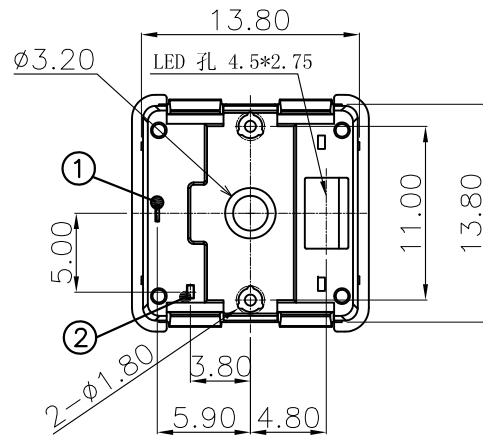
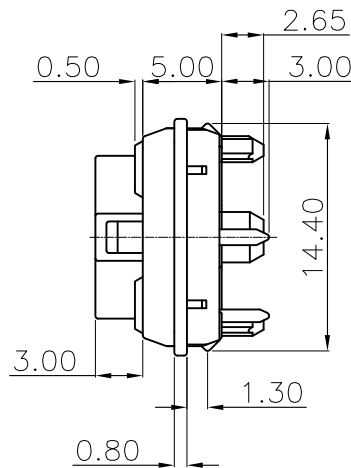
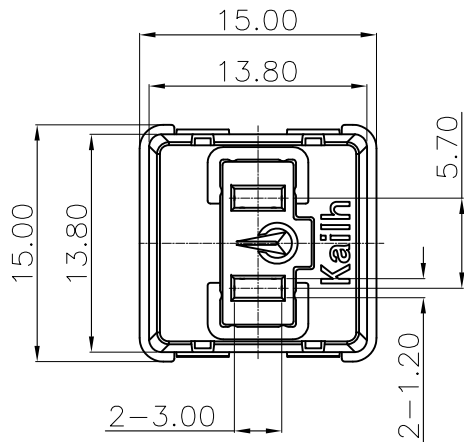
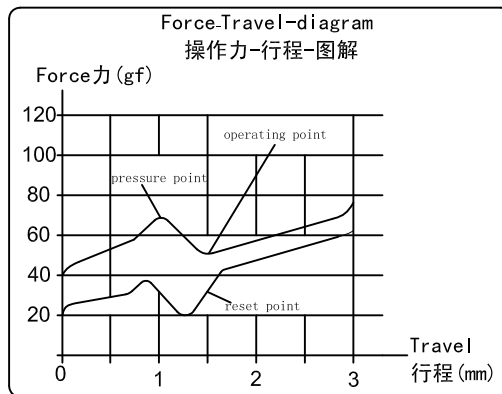


5 4 3 2 1

遵守欧盟WEEE和ROHS之规定



PCB开孔图(供参考)



有声有手感

技术参数:

工作温度: -20° C--80° C
额定值: DC12V 10mA
接触电阻: 200mΩ 最大
绝缘电阻: DC 100V >100MΩ
耐电压强度: AC 100V 1分钟
动作力: 50 ± 10gf
触感力: 60 ± 10gf
导通行程: 1.5 ± 0.5 mm
全行程: 3.0+0/-0.5mm
机械寿命: 2000万次

| | | | | | | | |
|--------|-----------|-----------|-------|--|--------------------|---------|--|
| 序号 | 零 件 | 端子编号 | 用量 | 材 料 | 镀层/颜色 | 备 注 | |
| 承 认 | | 日期 | | <div></div> <div>东莞市凯华电子有限公司 KAIHUA ELECTRONICS CO.,LTD</div> | | | |
| 设 计 | Lu Panhao | 2016.元.08 | | | | | |
| 审 核 | | | | 名 称 | PG1350 键盘开关(有声有手感) | | |
| 核 准 | | | | 料 号 | PG135001D03 | | |
| 未注尺寸公差 | | 30<L | ±0.30 | 角 度 | 单位: mm | 比例: 2:1 | 视角  |
| | | 10<L≤30 | ±0.20 | | | | |
| | | 5<L≤10 | ±0.15 | | | | |
| | | L≤5 | ±0.10 | | | | |
| | | ±2° | | 图 号 | 页次 1 OF 1 | | |

A

| | | | | | | |
|--------|----|-----|----|-----|-----|-----|
| | A0 | NEW | | | | |
| 工程变更单号 | 版次 | 日期 | 说明 | 修 改 | 审 核 | 核 准 |

4 3 2 1

1. General specification 基本事项

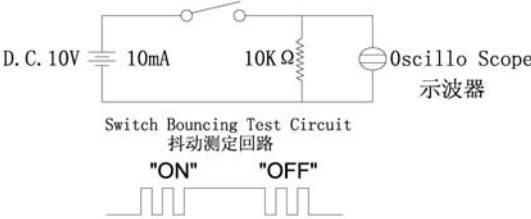

- 1.1 Switch action
开关种类
- 1.2 Switch rating 额定值
- 1.3 Operation temperature range 使用温度试验范围
- 1.4 Storage temperature range 保存温度范围
- 1.5 Suggested storage period 贮存期限
- 1.6 Appearance and dimensions 外形及尺寸
- 1.7 Standard condition

Ambient temperature 温度: 20±2℃
Relative humidity 相对湿度: 45 ~ 85
Air pressure 气压: 86 ~ 106kPa(860~1060mbar)
However, if doubt arises on the decision based on the measured
Values under the above-mentioned conditions, the following conditions shall be employed:
但是在对判定产生疑义时,按下述状态实施:

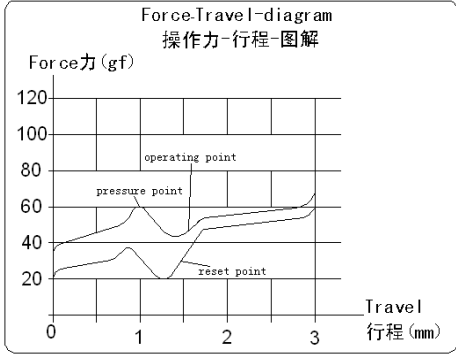
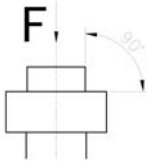
Ambient temperature 温度:20±2℃ Relative humidity 相对湿度: 65±5%
Air pressure 气压: 86 ~ 106kPa(860~1060mbar)


2. Performance 性能

2.1 Electrical characteristics 电气性能

| No. | Item 项目 | Test condition 试验条件 | Performance 规格 |
|--|-------------------------------|--|---------------------------------------|
| 2.1.1 | Contact resistance 接触电阻 | Push force: (Operation force) x 2。 测定时的负荷: 操作方向动作力基准值的2 倍。 Measurement tool : Contact resistance meter 测定器: 微电流接触电阻计(1kHz, 20mV, 5~50mA) | 200mΩ MAX 200mΩ 以下 |
| 2.1.2 | Insulation resistance 绝缘电阻 | D. C. 100V(Between terminals) (端子间) | 100MΩ min 100MΩ 以上 |
| 2.1.3 | Withstand voltage 耐电压 | A. C100V for 1 min (Between terminals) (端子间) | No. insulation destruction. 无绝缘破坏. |
| 2.1.4 | Bouncing 触点抖动 | Operation speed : 3~4 times/s 操作速度: 每秒3~4 次 Oscillo scope 示波器 Switch Bouncing Test Circuit 抖动测定回路  | ON:5ms max 以下 OFF:5ms max 以下 |
| REVISION | A 版 | | |
| | | | |
|  DONGGUAN CITY KAIHUA ELECTRONICS CO., LTD 东莞市凯华电子有限公司 | | WRITTEN BY | CHECKED BY |
| | | | |
| | | APPROVED BY | |
| | | | |


2.2 Mechanical Characteristics 机械性能

| No. | Item 项目 | Test condition 试验条件 | Performance 规格 |
|-------|--|--|---|
| 2.2.1 | Operation force 动作力 Travel to closure 动作行程（见图表） |  | operating force 操作力 $50 \pm 10\text{gf}$ Tactile force 触感力 $60 \pm 10\text{gf}$ Full Travel: $3.0\text{mm}+0/-0.5$ Pre Travel 预: $1.5\text{mm} \pm 0.5$ |
| 2.2.2 | Push strength 按压强度 | 30N (3Kgf) for 15 sec 30N (3Kgf) 15 秒  | No damage (Electrical and mechanical) 无异常 (电气、机械性能) |
| 2.2.3 | Pull strength 推压强度 | Break by drawing push plate in the direction of right diagram 抽拔推杆使其破坏的强度. | 50N min (5kgf min) |
| 2.2.4 | Vibration test 耐振性 | 1) Amplitude 全振幅: 1.5 mm 2) Sweep rate: 10-55-10HZ for 1 minute 扫描速度: 10-55-10HZ 1 分钟 3) Sweep method: Logarithmic frequency sweep rate 扫描方式: 对数频率扫描速度 4) Vibration direction: X, Y, Z (3 directions) 振动方向: X, Y, Z (3 方向) 5) Time: Each direction 2 hours (Total 6 hours) 时间: 每个方向2 个小时(共6 个小时) | No. 2.1 and 2.2.1 to 2.2.2 shall be satisfied 满足2.1 项和2.2.1 至 2.2.2 项. |
| 2.2.5 | Soldering heat test 耐焊接热 | 端子焊接部分浸入焊炉，焊炉温度 $260 \pm 5^\circ\text{C}$ ，焊接时间 5 ± 1 秒。（焊接时不可于端子施加外力）。 Terminals shall be dipped in the solder bath at $260 \pm 5^\circ\text{C}$ for 5 ± 1 seconds without additional force for terminals. | No damage (electrical and mechanical) 无异常。 (电气、机械特性) |
| 2.2.6 | Solderability 可焊性 | After sprated flux / 涂上助焊剂后 temperature : $260 \pm 5^\circ\text{C}$ / 温度: $260 \pm 5^\circ\text{C}$ soldering time : 2 ± 0.5 sec/ 焊接时间: 2 ± 0.5 秒 | 90% or more of surface area of the portion immersed in solder shall be covered by new solder / 90% 或更多的浸焊面能被焊锡覆盖. |

| | | | | |
|---|--|------------|------------|-------------|
| REVISION | A 版 | | | |
|  | DONGGUAN CITY KAIHUA ELECTRONICS CO., LTD 东莞市凯华电子有限公司 | WRITTEN BY | CHECKED BY | APPROVED BY |
| | | | | |

2.3 Climatic characteristics 耐候性能

| No. | Item 项目 | Test condition 试验条件 | Performance 规格 | | | | | | | | | | | | |
|--|------------------------------|---|---|-------------------|-----------------------------|---------------------|-------|----|--------|----|-------|----|-------|----|---|
| 2.3.1 | Cold test 耐寒性 | 1) Temperature : - 20±2℃ 温度: - 20±2℃ 2) Duration of test: 48h 持续时间: 48 小时 3) Take off a drop water 去掉水珠 4) Standard conditions after test : 1h 试验后的放置条件: 1 小时 | Contact resistance 200mΩ max No. 2.1.2 to 2.1.4 and No. 2.2.1 to 2.2.2 shall Be satisfied 接触电阻 200mΩ 以下 满足2.1.2 到2.1.4 项、 2.2.1 到2.2.2 项. | | | | | | | | | | | | |
| 2.3.2 | Heat test 耐热性 | 1) Temperature : 60±2℃ 温度: 60±2℃ 2) Duration of test: 48h 持续时间: 48 小时 3) Standard conditions after test : 1h 试验后的放置条件: 1 小时 | Contact resistance 200mΩ max No. 2.1.2 to 2.1.4 and No. 2.2.1 to 2.2.2 shall Be satisfied 接触电阻 200mΩ 以下 满足2.1.2 到2.1.4 项、2.2.1 到 2.2.2 项. | | | | | | | | | | | | |
| 2.3.3 | Temperature cycle 温度循环 | 1) Test cycles :20 cycles 试验周期: 20 个周期 2) Standard condition after test :1h 试验后的放置条件: 1 小时 <table><tr><td></td><td>temperature 温度</td><td>duration of test 持续时间</td></tr><tr><td rowspan="4">1 cycle 一次 循环</td><td>20±5℃</td><td>1h</td></tr><tr><td>-40±2℃</td><td>1h</td></tr><tr><td>20±5℃</td><td>1h</td></tr><tr><td>60±5℃</td><td>1h</td></tr></table> | | temperature 温度 | duration of test 持续时间 | 1 cycle 一次 循环 | 20±5℃ | 1h | -40±2℃ | 1h | 20±5℃ | 1h | 60±5℃ | 1h | Contact resistance 200mΩ max No. 2.1.2 to 2.1.4 and No. 2.2.1 to 2.2.2 shall be satisfied 接触电阻 200mΩ 以下 满足2.1.2 到2.1.4 项、 2.2.1 到2.2.2 项. |
| | temperature 温度 | duration of test 持续时间 | | | | | | | | | | | | | |
| 1 cycle 一次 循环 | 20±5℃ | 1h | | | | | | | | | | | | | |
| | -40±2℃ | 1h | | | | | | | | | | | | | |
| | 20±5℃ | 1h | | | | | | | | | | | | | |
| | 60±5℃ | 1h | | | | | | | | | | | | | |
| 2.3.4 | Humidity test 耐湿性 | 1) Temperature : 60±2℃ 温度: 60±2℃ 2) relative humidity: 90~95% 相对温度:90~95% 3) Duration of test: 96h 持续时间: 96 小时 3) Take off a drop water 去掉水珠 5) Standard conditions after test : 1h 试验后的放置条件: 1 小时 | Contact resistance 200mΩ max No. 2.1.2 to 2.1.4 and No. 2.2.1 to 2.2.2 shall Be satisfied 接触电阻 200mΩ 以下 满足2.1.2 到2.1.4 项、 2.2.1 到2.2.2 项. | | | | | | | | | | | | |
| REVISION | A 版 | | | | | | | | | | | | | | |
| DONGGUAN CITY KAIHUA ELECTRONICS CO., LTD 东莞市凯华电子有限公司 | | WRITTEN BY | CHECKED BY | | | | | | | | | | | | |
| | | | | | | | | | | | | | | | |
| | | APPROVED BY | | | | | | | | | | | | | |
| | | | | | | | | | | | | | | | |

| No. | Item 项目 | Test condition试验条件 | Performance 规格 |
|--|---|---|---|
| 2.3.5 | Endurance (switching action) 耐久特性 (开关寿命) | 1) D.C. 12V 10mA resistance load D.C 12V 10mA 电阻负荷 2) Operation speed : 1 times / s 动作速度: 2-3 次/ 秒 3) Push force : Maximum value of operation force 按力: 动作力规格值的上限 4) Operation number: 20, 000, 000cycles 动作次数: 20, 000, 000次 | Contact resistance 30 Ω max 接触电阻 30 Ω 以下 Bouncing: 10 ms max 触点抖动: 10 秒以下 Variation rate of operation force shall be within $\pm 30\%$ to the value before testing 动作力的变化范围在初始值的 $\pm 30\%$ 以内 No. 2.1.2 and 2.2.2 shall Be satisfied 满足2.1.2 和2.2.2 项 |
| 2.3.6 | 盐雾实验 Salt Mist Test | 试件在下述实验后测量: 1. 温度: $35 \pm 5^{\circ}\text{C}$ 2. 盐溶液浓度: $5 \pm 1\%$ (质量百分比), 3. 试验时间: 4 小时, 4. 试验后, 将盐沉积物用水冲掉。 The switch shall be checked after following test: 1. Temperature: $35 \pm 5^{\circ}\text{C}$ 2. Salt solution: $5 \pm 1\%$ (Solids by mass) 3. Duration: 4 hours, 4. After immersing, salt deposit shall be removed by running water. | Contact resistance 200m Ω max No. 2.1.2 to 2.1.4 and No. 2.2.1 to 2.2.2 shall Be satisfied 接触电阻 200m Ω 以下 满足2.1.2 到2.1.4 项、2.2.1 到2.2.2 项. |
| 2.3.7 | Shock 耐冲击性 | Measure after test at a condition below 在下列条件下进行测试后的量度 Peak acceleration: 80G 冲击加速度: 80G Test time-6direction , each 3 times total 18 times 测试次数-6 个方向, 各3 次共计18 次。 | No. 2.1 and 2.2.1 to 2.2.2 shall be satisfied 第2.1 及2.2.1—2.2.2 都应符合要求 |
| REVISION | | A 版 | |
|  DONGGUAN CITY KAIHUA ELECTRONICS CO., LTD 东莞市凯华电子有限公司 | | WRITTEN BY | CHECKED BY |
| | | | |
| | | APPROVED BY | |
| | | | |

4. Precaution 注意事项

4.1 Soldering condition 浸焊条件

| ITEM 项目 | CONDITION 条 件 |
|-------------------------------|---|
| Preheat temperature 预热温度 | 110°C max (Embilomental temperature of soldering surface of P. W. E) 110°C 以下 (印刷基板焊锡面周围的温度) |
| Preheat time 预热时间 | 60 sec, max 60 秒以内 |
| Area of flux 助焊剂的面积 | 1/2 max of P. W. B. thickness 印刷基板厚度的1/2 以内 |
| Temperature of solder 焊锡温度 | 260±5°C 260±5°C |
| Time of immersion 浸焊时间 | Within 5 sec 5 秒以内 |
| Soldering number 浸焊次数 | Within 2 times (But should bring down heat of the first soldering) 2 次以内 (但应把第一次焊锡的温度降下来) |

1) After switches were soldered, please be careful not to clean switches with solvent

开关浸焊后, 注意不要用溶剂清洗.

2) In the case of using soldering iron, soldering conditions shall be 280oC max and 3 sec. max

在使用铬铁的情况下, 焊锡温度应在350±10°C 以下, 3 秒以内.

3) Right after switches were soldered; please be careful not to load on the knobs of switches.

浸焊后, 注意不要在顶部施加负荷.

4.2 Note (注意点)

1) Please be cautious not to give excessive static load or shock to switches.

注意不要施加超负荷的压力或晃动开关.

2) Please be careful not to pile up P. W. B. after switches were soldered.

开关焊接以后, 印刷基板注意不要叠放.

3) Preservation under high temperature and high humidity or corrosive gas should be avoided especially. When you need to preserve for a long period, do not open the carton.

保管时尤其应注意避开高湿高温和有腐蚀性气体的环境. 如需长时间保存, 请不要打开包装箱.

4) Panasert RH and RH6 shall be used as the standard insert machine (use N type clinch).

使用标准插入机器PANASERT 和RH6 (使用N 式钉)

5) CONTROL HAZARDOUS SUBSTANCE: THE PRODUCT SHOULD BE MEET

ROHS SPECIFICATION.

产品应满足 ROHS 环境管理物质管制标准