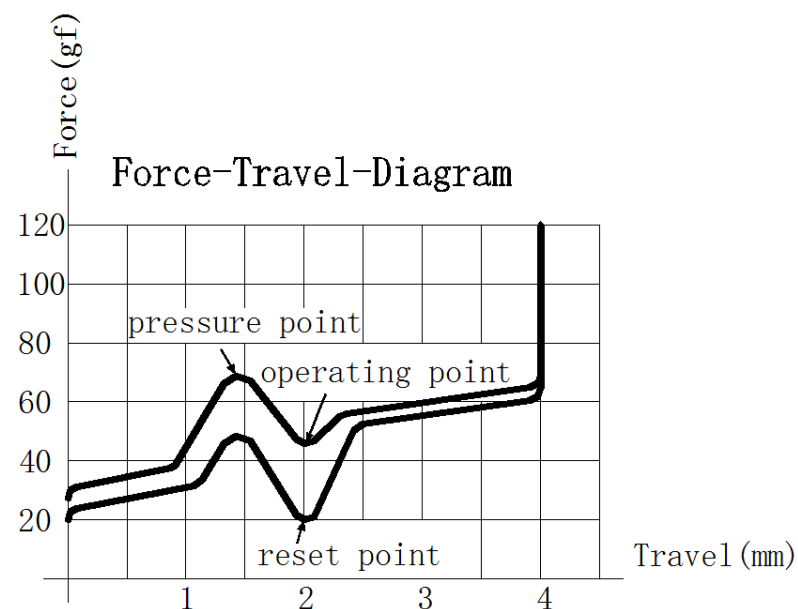
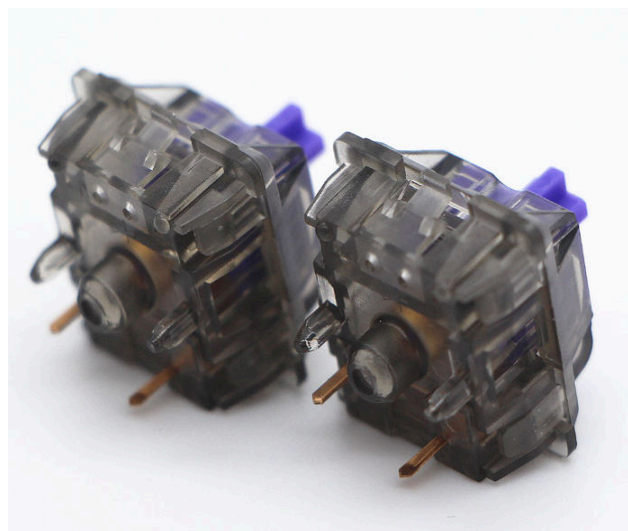


Tactile T1 Switch

Technical Data:

- Switching voltage: 12 V AC/DC max.
- Switching current: 10 mA AC/DC max.
- Dielectric strength: 500 V / 50Hz
- Durability: > 0.5 million actuations
- Contact configuration: Single-pole contact
- Actuator travel: 4.0 ± 0.3 mm
- Pretravel: 2.0 ± 0.6 mm
- Initial force: 20gf min.
- Operating force: 70 ± 20 gf.
- Total travel force: 67 ± 20 cN
- Bounce time: < 5 ms (during actuation with 0,4 m/s)
- Spring: Stainless steel (gold-plate)
- Contacts: High-quality gold alloy
- Storage Temperature: -40°C to 70°C
- Operating Temperature: -10°C to 70°C

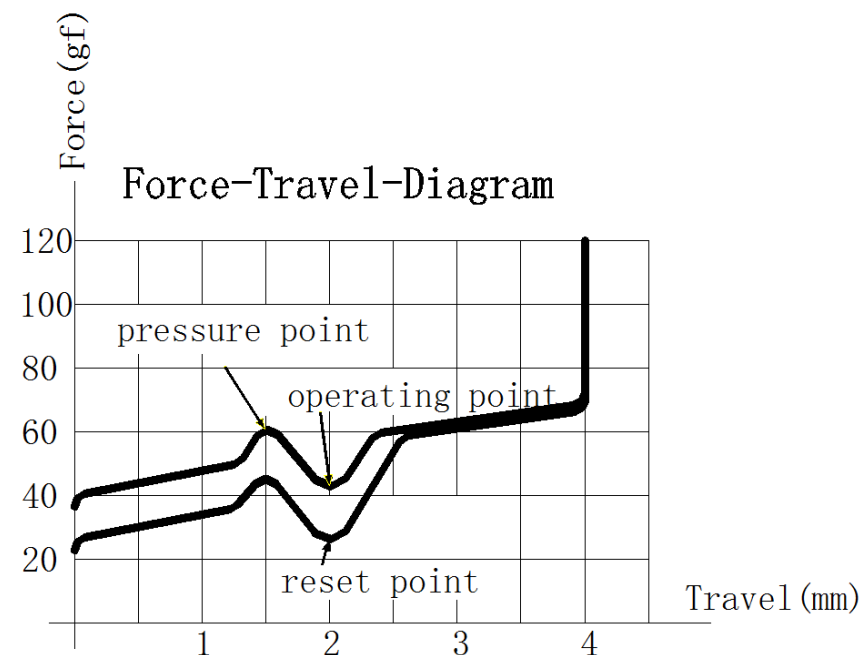




Tactile Purple Switch

Technical Data:

- Switching voltage: 12 V AC/DC max.
- Switching current: 10 mA AC/DC max.
- Dielectric strength: 500 V / 50Hz
- Durability: > 0.5 million actuations
- Contact configuration: Single-pole contact
- Actuator travel: 4.0 ± 0.3 mm
- Pretravel: 2.0 ± 0.6 mm
- Initial force: 20gf min.
- Operating force: 60 ± 20 gf.
- Total travel force: 67 ± 20 cN
- Bounce time: < 5 ms (during actuation with 0,4 m/s)
- Spring: Stainless steel (gold-plate)
- Contacts: High-quality gold alloy
- Storage Temperature: -40°C to 70°C
- Operating Temperature: -10°C to 70°C

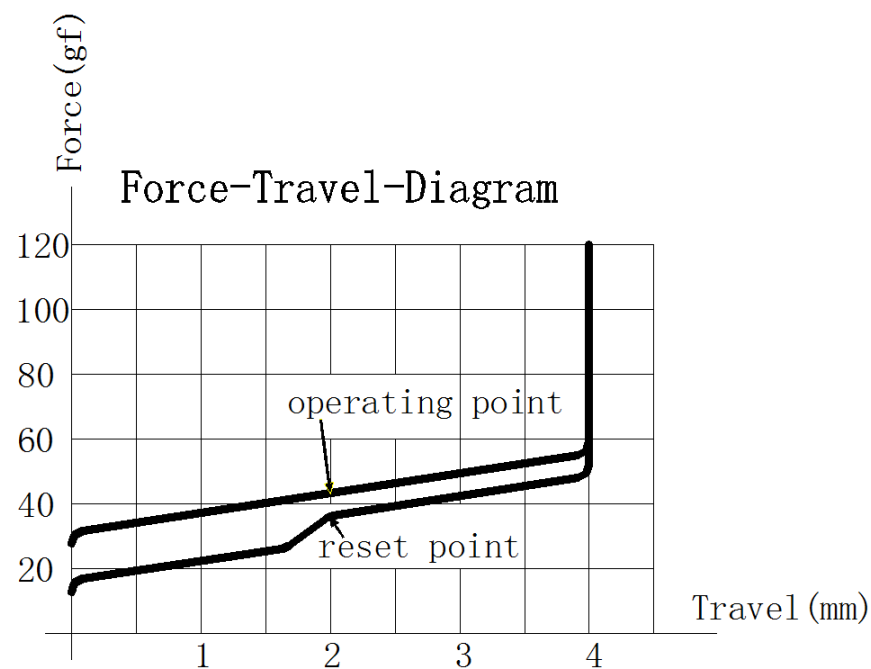


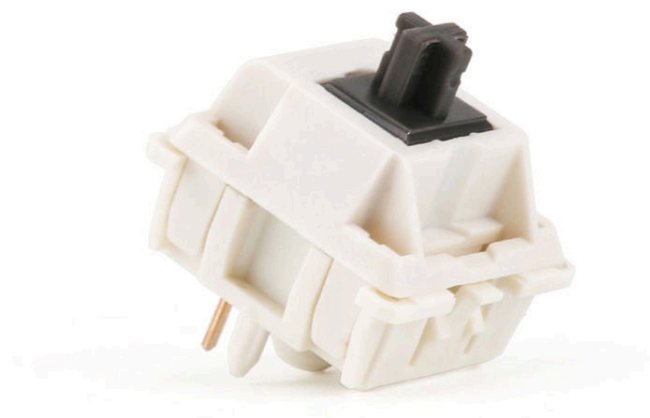


Linear Switch

Technical Data:

- Switching voltage: 12 V AC/DC max.
- Switching current: 10 mA AC/DC max.
- Dielectric strength: 500 V / 50Hz
- Durability: > 0.5 million actuations
- Contact configuration: Single-pole contact
- Actuator travel: 4.0 ± 0.3 mm
- Pretravel: 2.0 ± 0.6 mm
- Initial force: 20gf min.
- Operating force: 50 ± 20 gf.
- Total travel force: 62 ± 20 cN
- Bounce time: < 5 ms (during actuation with 0,4 m/s)
- Spring: Stainless steel (gold-plate)
- Contacts: High-quality gold alloy
- Storage Temperature: -40° C to 70° C
- Operating Temperature: -10° C to 70° C





Technical Data:

- Switching voltage: 12 V AC/DC max.
- Switching current: 10 mA AC/DC max.
- Dielectric strength: 500 V / 50Hz
- Durability: > 0.5 million actuations
- Contact configuration: Single-pole contact
- Actuator travel: 4.0 ± 0.3 mm
- Pretravel: 2.0 ± 0.6 mm
- Initial force: 20gf min.
- Operating force: 67 ± 20 gf.
- Total travel force: 62 ± 20 cN
- Bounce time: < 5 ms (during actuation with 0,4 m/s)
- Spring: Stainless steel (gold-plate)
- Contacts: High-quality gold alloy
- Storage Temperature: -40°C to 70°C
- Operating Temperature: -10°C to 70°C

Koala Switch(Tactile, base on T1)

